

PHOTOVOLTAIC MODULE AS-M60XB



ELECTRICAL CHARACTERISTICS AT STC¹

Nominal Power (Pmax)	[Wp]	290	295	300	305	310
Tolerance on Nominal Power Pmax ²	[W]	0-5	0-5	0-5	0-5	0-5
Maximum Power Voltage (Vmp)	[V]	31.93	32.02	32.21	32.40	32.62
Maximum Power Current (Imp)	[A]	9.10	9.23	9.33	9.43	9.52
Open Circuit Voltage (Voc)	[V]	39.20	39.40	39.50	39.90	40.10
Short Circuit Current (Isc)	[A]	9.50	9.58	9.69	9.79	9.89
Module Efficiency (ηm)		17.8%	18.1%	18.4%	18.7%	19.1%
Maximum System Voltage	[V]	1000	1000	1000	1000	1000
Series Fuse Maximum Rating	[A]	15	15	15	15	15

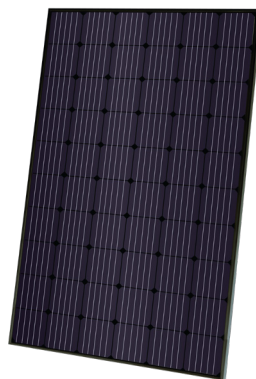
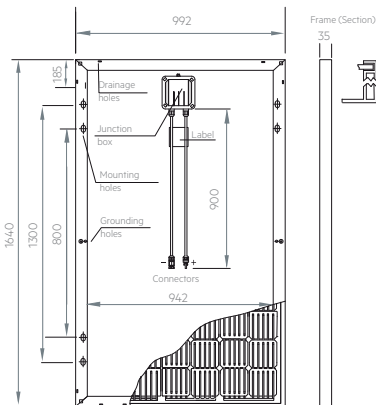
ELECTRICAL CHARACTERISTICS NOCT³

Product type: AS-M60XB-xxx (xxx=290-310)		290	295	300	305	310
Maximum Power (Pmax)	[W]	212	216	219	223	227
Maximum Power Voltage (Vmp)	[V]	29.6	29.8	30.0	30.3	30.6
Maximum Power Current (Imp)	[A]	7.17	7.25	7.30	7.36	7.42
Open Circuit Voltage (Voc)	[V]	36.1	36.3	36.5	36.9	37.1
Short Circuit Current (Isc)	[A]	7.79	7.86	7.97	8.05	8.13

MECHANICAL CHARACTERISTICS

Solar cells	60 (6 x 10) monocrystalline silicon, 156.75 x 156.75 mm (6") cells
Front glass	3.2 mm (1.25") high-transparency AR coating glass
Backsheet	black
Encapsulant	EVA (Ethylene-Vinyl Acetate)
Frame	Anodized aluminum alloy, black
Junction box	IP67 rated, 3 bypass diodes
Cables	UVresistant cable, 900 / 1000 mm (35.43" / 39.37"), sec.4.0 mm ²
Connectors	MC4 compatible connectors
Dimensions	1640 mm x 992 mm x 35 mm (64.6" x 39" x 1.37")
Weight	18.5 kg (40.8 lbs)
Maximum load	Wind: 2400 Pa / Snow: 5400 Pa

TECHNICAL DRAWINGS



Modulmaße sind in mm ausgedrückt mit einer Toleranz von +2 mm (+0.079")

Module dimensions in the technical picture are expressed in mm with tolerance +2 mm (+0.079")

1- Standard Test Conditions (STC): Irradiance 1000 W/m², Air Mass AM = 1.5, Cell Temperature 25°C, Power measurement uncertainty within ± 3%

2- AEG photovoltaic modules are classified according to a principle of positive power tolerance: the Power Output measured at STC of the delivered modules exceeds their assigned Nameplate Nominal Power at STC within a power tolerance range between -0 Wp and +5 Wp.

3- Normal Operating Cell Temperature (NOCT): Irradiance 800 W/m², Wind Speed 1m/s; Ambient Temperature 20°C, Power measurement uncertainty within ± 3%

4- No less than 97% of the minimum "Peak Power at STC" in the first year; power output decline no more than 0.7% per year thereafter. Full text of the Warranty Terms available at www.aeg-industrialsolar.de

© Solar Solutions GmbH. Specifications in this datasheet are subject to change without notice. Code: AS-M60XB-P-06N1-5BB 290-310 version 201904.V1.EN-VDH

AEG is a registered trademark used under license from AB Electrolux (pub).

TEMPERATURE CHARACTERISTICS

NOCT	45°C ± 2°C
Pmax Temp. Coefficient (γ)	-0.40 %/K
Voc Temp. Coefficient (β)	-0.31 %/K
Isc Temp. Coefficient (α)	0.06 %/K
Operating temperature	-40°C to + 85°C

PACKING CONFIGURATION

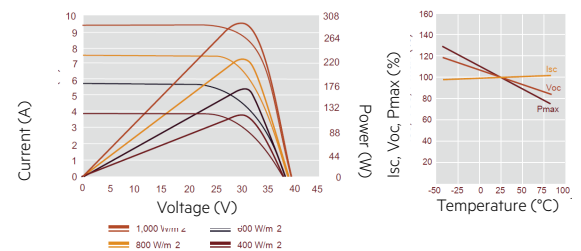
Packing configuration	30 pcs / pallet
Loading capacity	840 pcs / 40 ft HC

WARRANTIES

Product warranty	12 years
Performance warranty	25 years, linear ⁴

I-V CURVES / IRRADIANCES

Test temperature: 25 °C



— 1,000 W/m² — 800 W/m² — 400 W/m²